

# HORIZONTAL LEVER CLAMPING



**GI-ZETA IMPIANTI S.r.l.**

25030 via Vanzago, 2 PARATICO (BS)  
ITALIA

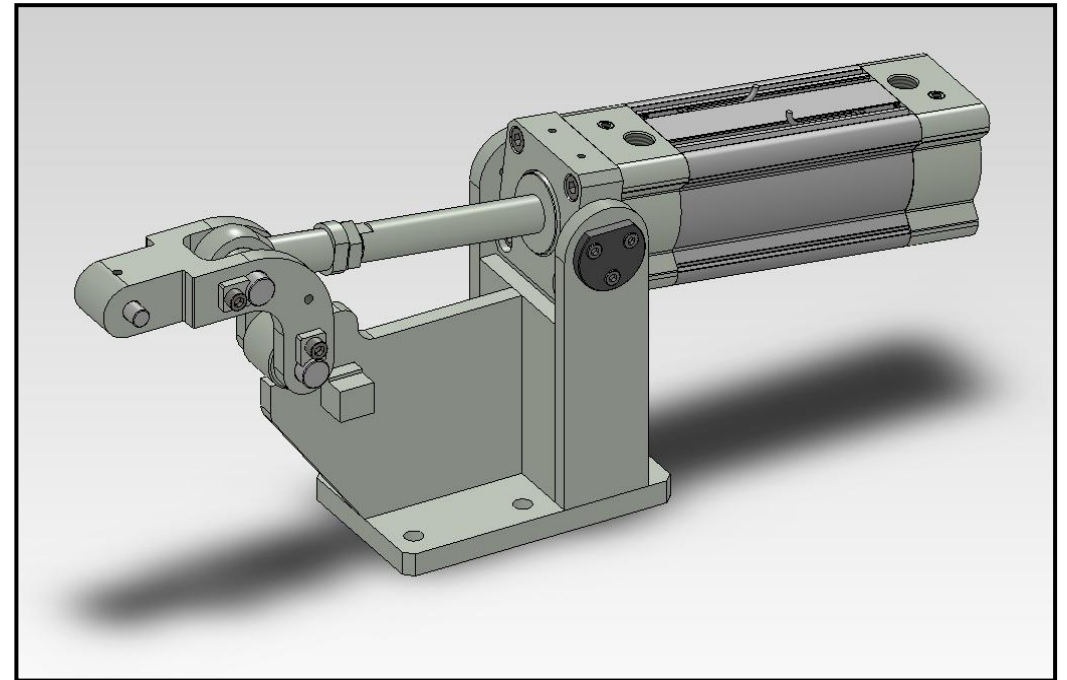
[uff.commerciale@gizetaimpianti.it](mailto:uff.commerciale@gizetaimpianti.it)  
[www.gizetaimpianti.it](http://www.gizetaimpianti.it)  
Ph. 035 917975 - Fax 035 917782

COMMERCIAL  
CODE

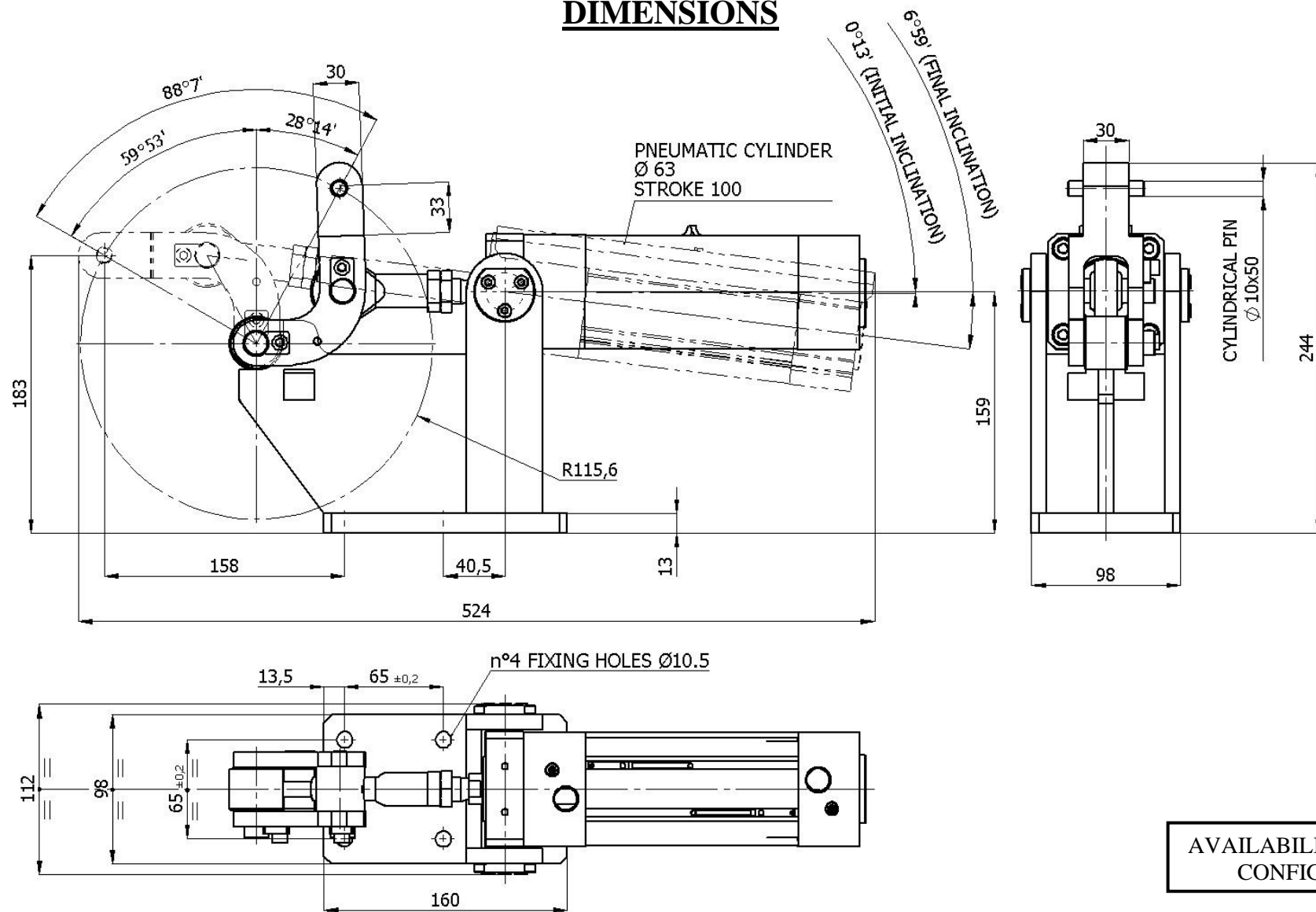
**SM SMEL 3 0001 BA**

## MAIN TECHNICAL FEATURES

Fluid	[ / ]	Air
Bore	[ mm ]	63
Stroke	[ mm ]	100
Weight	[ kg ]	15
Working position	[ / ]	Any
Rotation angle	[ ° ]	88.12
Max. working pressure	[ bar ]	12
Working temperature	[ °C ]	-20...+80
Clamping force (6 bar) tangent to rotation (static load)	[ N ]	865
Release force (6 bar) tangent to rotation (static load)	[ N ]	780



## DIMENSIONS



AVAILABILITY OF CUSTOM  
CONFIGURATIONS

\* For further technical information, please contact our Technical Office.